

FIT AND MEASURING GUIDE

1. MEASURING TIP

Check your current City Club trousers for size.

2. YOUR MEASUREMENTS

Follow the guidelines below to check your own measurements.

3. WAIST

Keep the tape measure firm but not tight. Measure around the smallest part of the waist. For fuller customers – measure around the position where the elbow meets the body or measure where your current pants sit comfortably.

4. HIP

Keep the tape measure firm but not tight. Measure around the widest part of the hip.

5. IN LEG

Measure from the top of the inside leg to below the ankle bone.

6. SIZE GUIDELINES

Most City Club styles are available in a choice of size ranges. Compare your measurements to the size grids below to find your perfect fit.



NOT SURE ABOUT YOUR PERFECT SIZE & FIT ?

Fits and measurements can vary from style to style, remember that styles with City Club's unique flexi-waist can be used to size down if you are in-between waist sizes.

Our Customer Service team can help find that perfect fit:

Call 1800 653 332

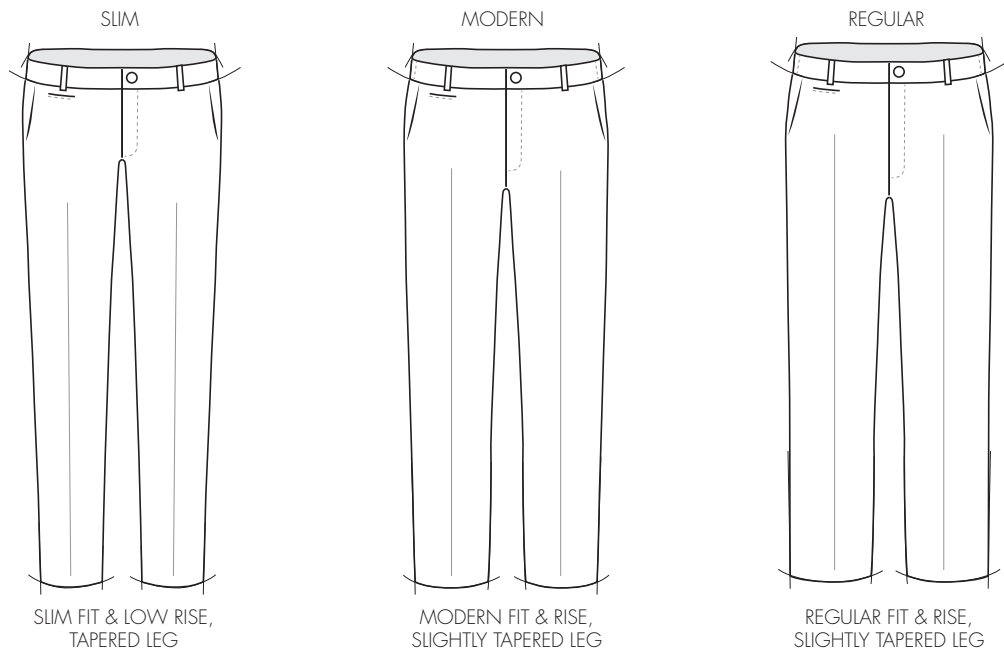
Monday to Thursday 8:30am – 4:30pm EST

Friday 8:30am – 1:30pm EST

Email customer.service@cityclub.com.au

You are welcome to try your purchase on in the comfort of your own home and notify our Customer Service team if you would like a refund within 21 days. This is in line with our [Returns Policy](#).

SLIM, MODERN & REGULAR FITS



Size Charts

Measurements are 'to fit' not actual garment measurements. Inleg measurements relate to pants only.

Measurements are approximate and can vary from style to style and from fabric to fabric.

R SIZES	SIZE	72R/28	77R/30	79R/31	82R/32	84R/33	87R/34	89R/35	92R/36	97R/38	102R/40	107R/42	112R/44	117R/46	122R/48
		XXS	XS		S		M		L	XL	XXL	3XL	4XL	5XL	6XL
	Waist	72	77	79	82	84	87	89	92	97	102	107	112	117	122
	Hip	92	94.5	97	99.5	102	104.5	107	109.5	114.5	119.5	124.5	129.5	134.5	139.5
	Inleg	82	82	82	83	83	84	84	84	85	86	87	n/a	n/a	n/a

S SIZES	SIZE	87S/34	92S/36	97S/38	102S/40	107S/42	112S/44	117S/46	122S/48	127S/50	132S/52	137S/54	142S/56	147S/58	152S/60
		Waist	87	92	97	102	107	112	117	122	127	132	137	142	147
	Hip	100	105	111	115	120	125	130	135	139	144	149	154	158	162
	Inleg	77	77	78	81	81	84	84	85	85	85	85	85	85	85

T SIZES	SIZE	77T/30	82T/32	87T/34	92T/36	97T/38	102T/40	107T/42	112T/44
		Waist	77	82	87	92	97	102	107
	Hip	94.5	99.5	104.5	109.5	114.5	119.5	124.5	129.5
	Inleg	96.5	96.5	96.5	96.5	96.5	96.5	96.5	96.5

CLASSIC & PLEAT FITS



Size Charts

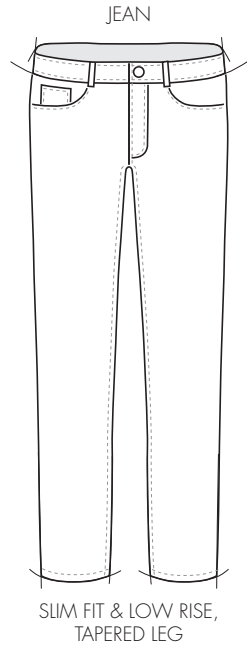
Measurements are 'to fit' not actual garment measurements. Inleg measurements relate to pants only. Measurements are approximate and can vary from style to style and from fabric to fabric.

R SIZES	SIZE	77R/30	82R/32	87R/34	92R/36	97R/38	102R/40
	Waist	77	82	87	92	97	102
	Hip	99	104	109	114	119	124
	Inleg	75	77.5	80	82.5	84	85

S SIZES	SIZE	87S/34	92S/36	97S/38	102S/40	107S/42	112S/44	117S/46	122S/48	127S/50	132S/52	137S/54	142S/56	147S/58	152S/60
	Waist	87	92	97	102	107	112	117	122	127	132	137	142	147	152
	Hip	107	112	117	123	128	133	138	143	145.5	150.5	155.5	160.5	170.5	175.5
	Inleg	72.5	75	77.5	80	80	82.5	82.5	84	84	84	84	84	85	85

S SIZES	SIZE	157S/62	162S/64	167S/66	172S/68	177S/72	182S/74
	Waist	157	162	167	172	177	182
	Hip	180.5	185.5	190.5	195.5	200	205.5
	Inleg	85	85	85	85	85	85

JEAN FITS



Size Charts

Measurements are 'to fit' not actual garment measurements. Inleg measurements relate to pants only.
Measurements are approximate and can vary from style to style and from fabric to fabric.

31" INLEG	SIZE cm	77	82	87	92	97	102	107	112	117	122
	SIZE "	30X31	32X31	34X31	36X31	38X31	40X31	42X31	44X31	46X31	48X31
	Waist	79	84	89	94	99	104	109	114	119	124
	Hip	97	102	107	112	117	122	127	132	137	142
	Inleg	78.5	78.5	78.5	78.5	78.5	78.5	78.5	78.5	78.5	78.5

33" INLEG	SIZE cm	77	82	87	92	97	102	107	112	117	122
	SIZE "	30X33	32X33	34X33	36X33	38X33	40X33	42X33	44X33	46X33	48X33
	Waist	79	84	89	94	99	104	109	114	119	124
	Hip	97	102	107	112	117	122	127	132	137	142
	Inleg	84	84	84	84	84	84	84	84	84	84